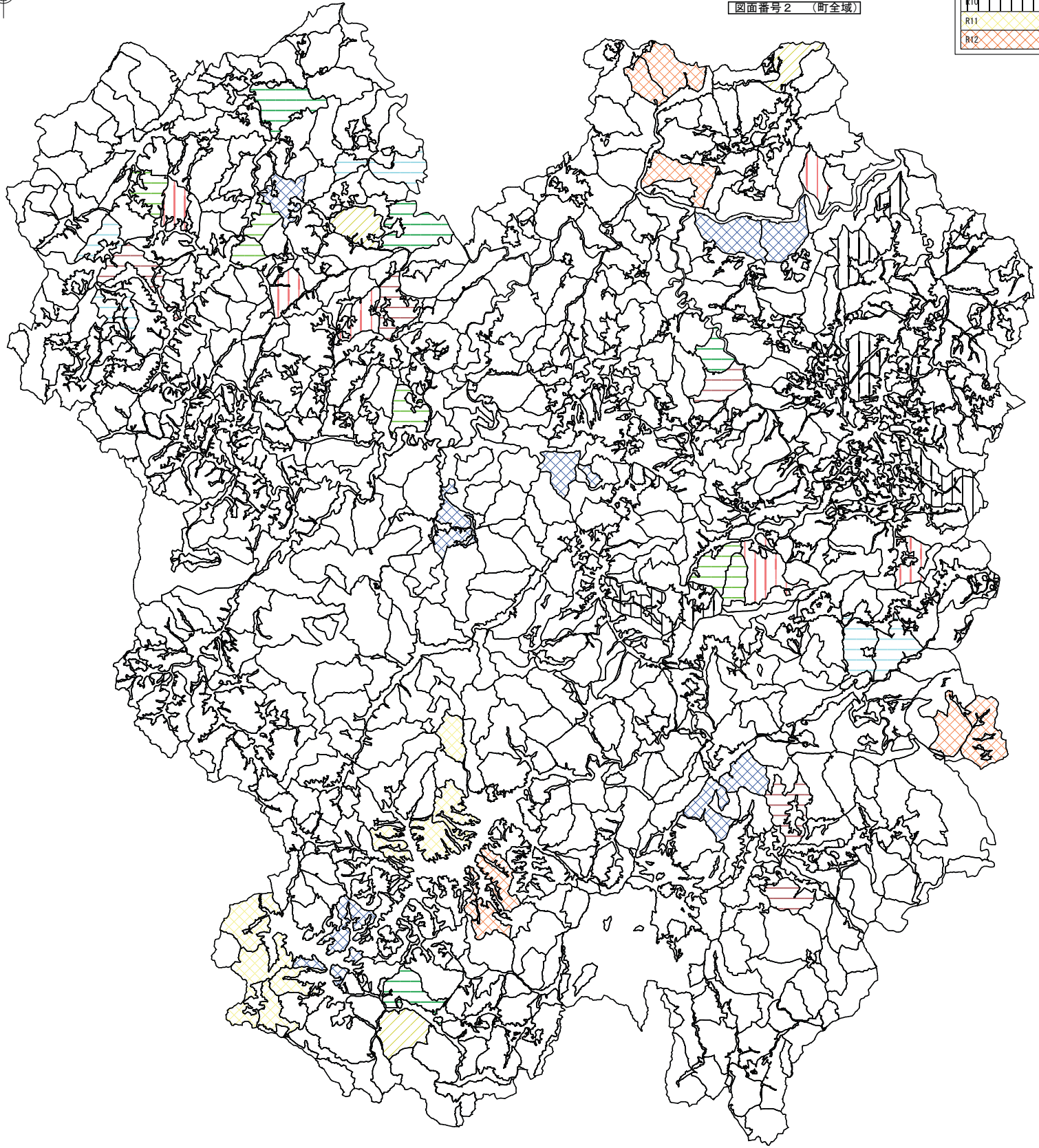


色 凡 例

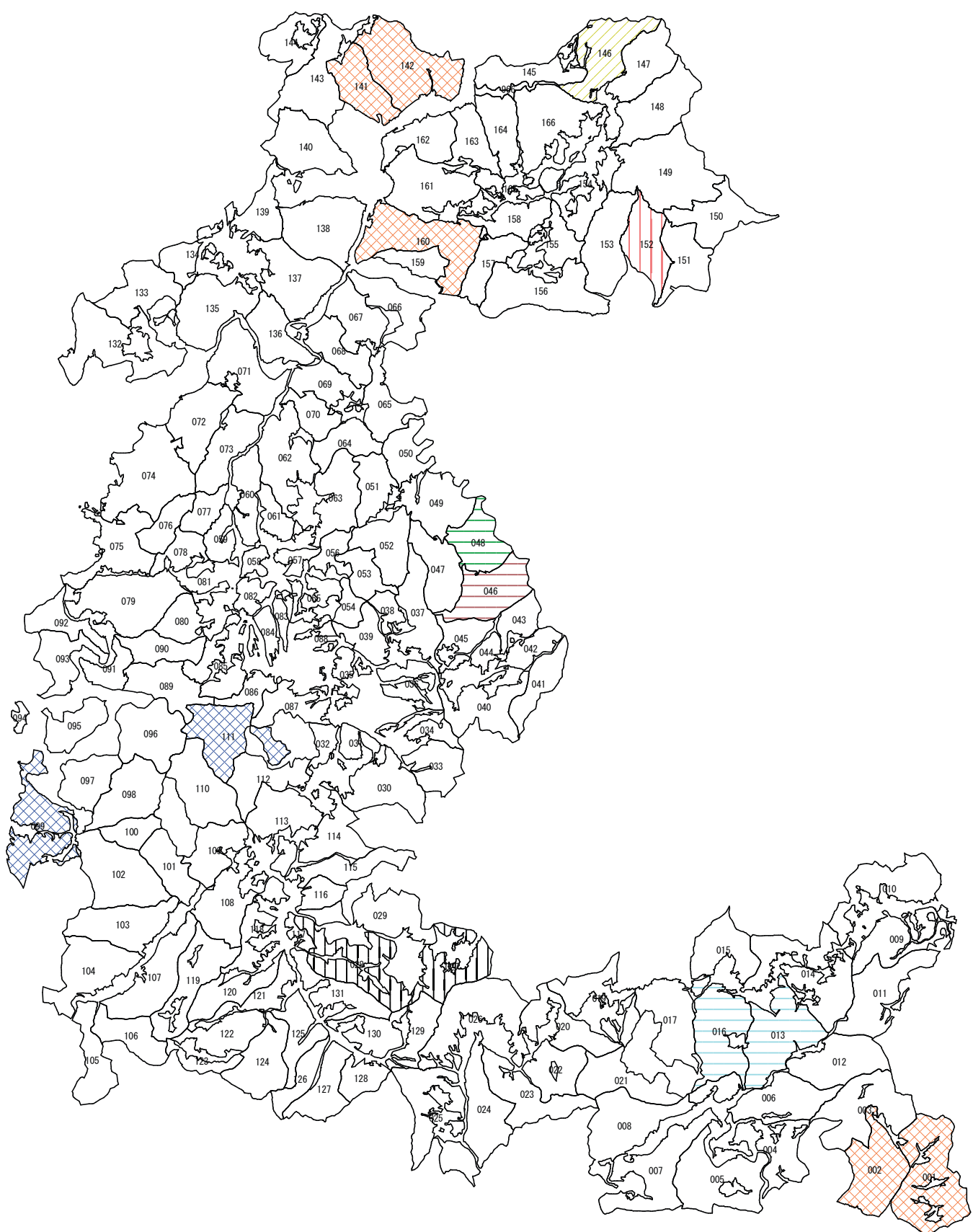
R3	Green horizontal lines
R4	Light blue horizontal lines
R5	Light red horizontal lines
R6	Yellow diagonal lines (top-left to bottom-right)
R7	Red vertical lines
R8	Light blue horizontal lines
R9	Blue cross-hatch pattern
R10	Black vertical lines
R11	Yellow diagonal lines (top-right to bottom-left)
R12	Orange cross-hatch pattern

图面番号2 (町全域)



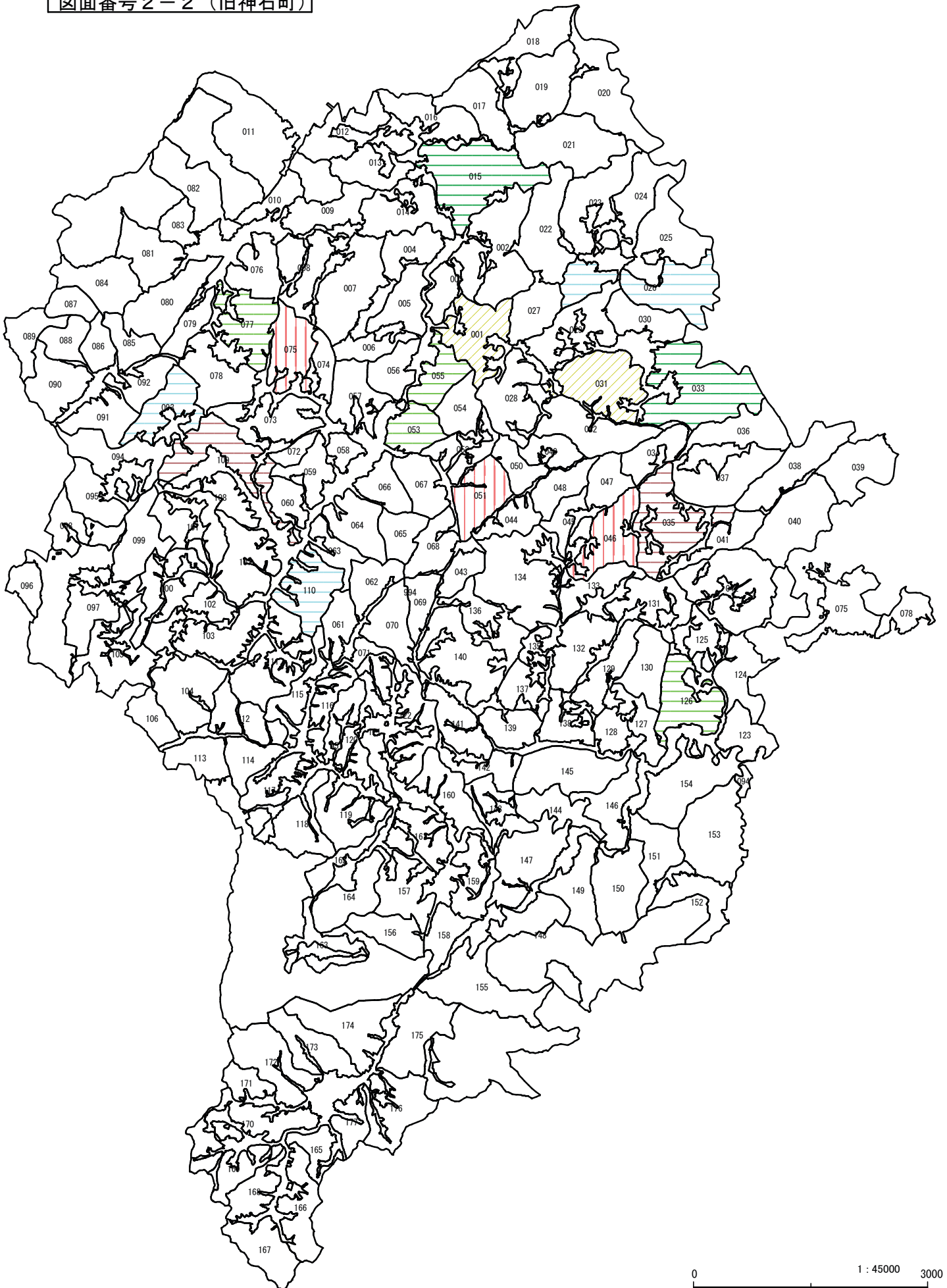
R3	Green horizontal lines
R5	White
R6	Yellow diagonal lines
R7	Red vertical lines
R8	White
R9	Blue diagonal lines
R10	Black vertical lines
R12	Orange diagonal lines

図面番号 2-1 (旧油木町)

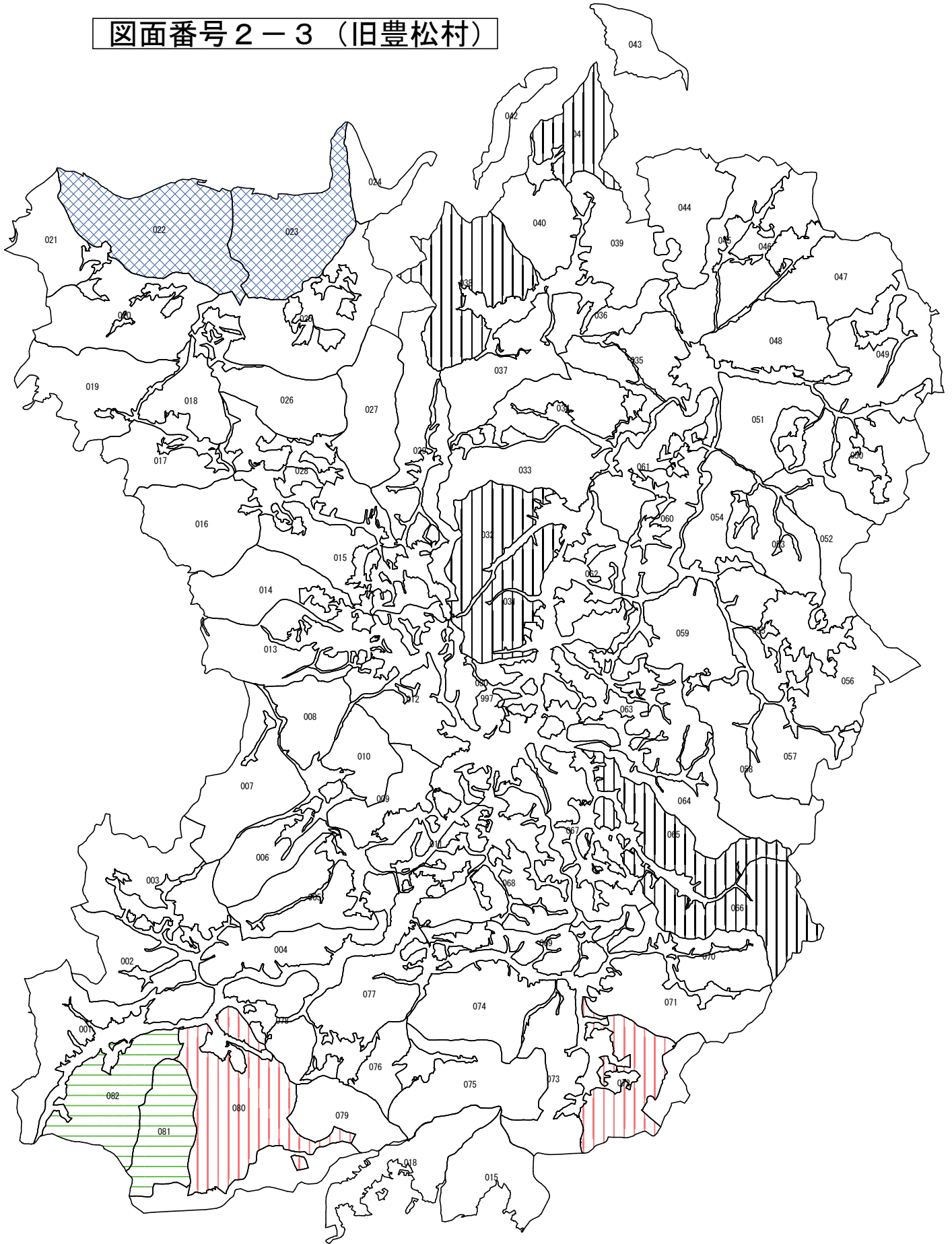


R3	
R4	
R5	
R6	
R7	
R8	

図面番号 2-2 (旧神石町)

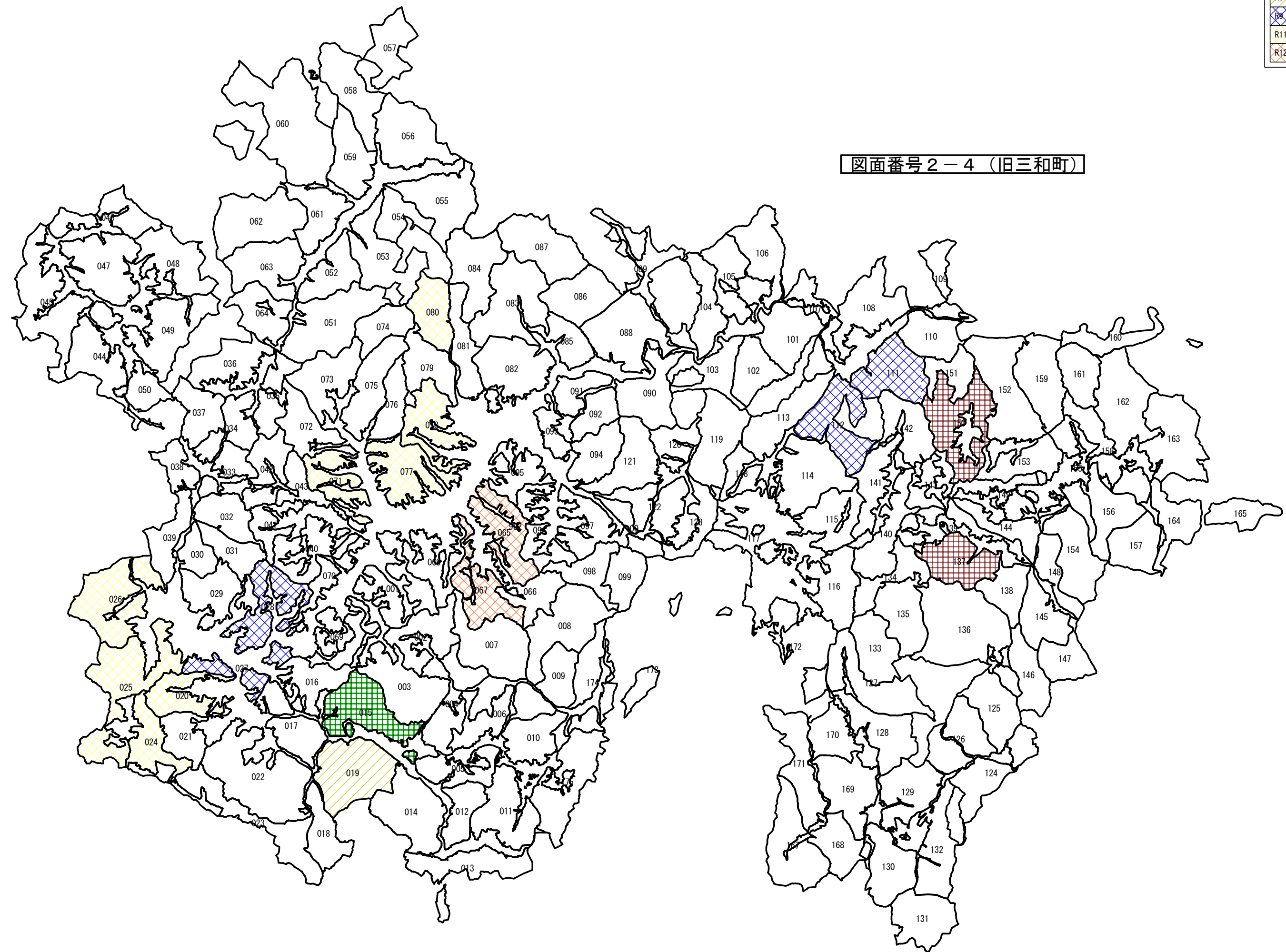


図面番号 2 - 3 (旧豊松村)



色 凡 例	
R3	
R5	
R6	
R8	
R11	
R12	

図面番号 2-4 (旧三和町)



0 1 : 50000 5000